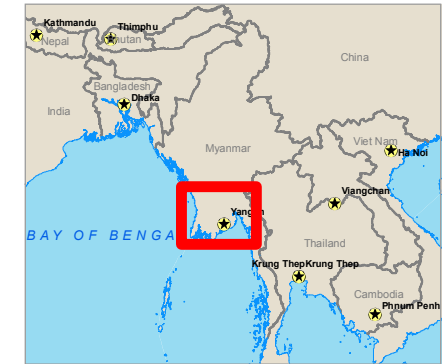
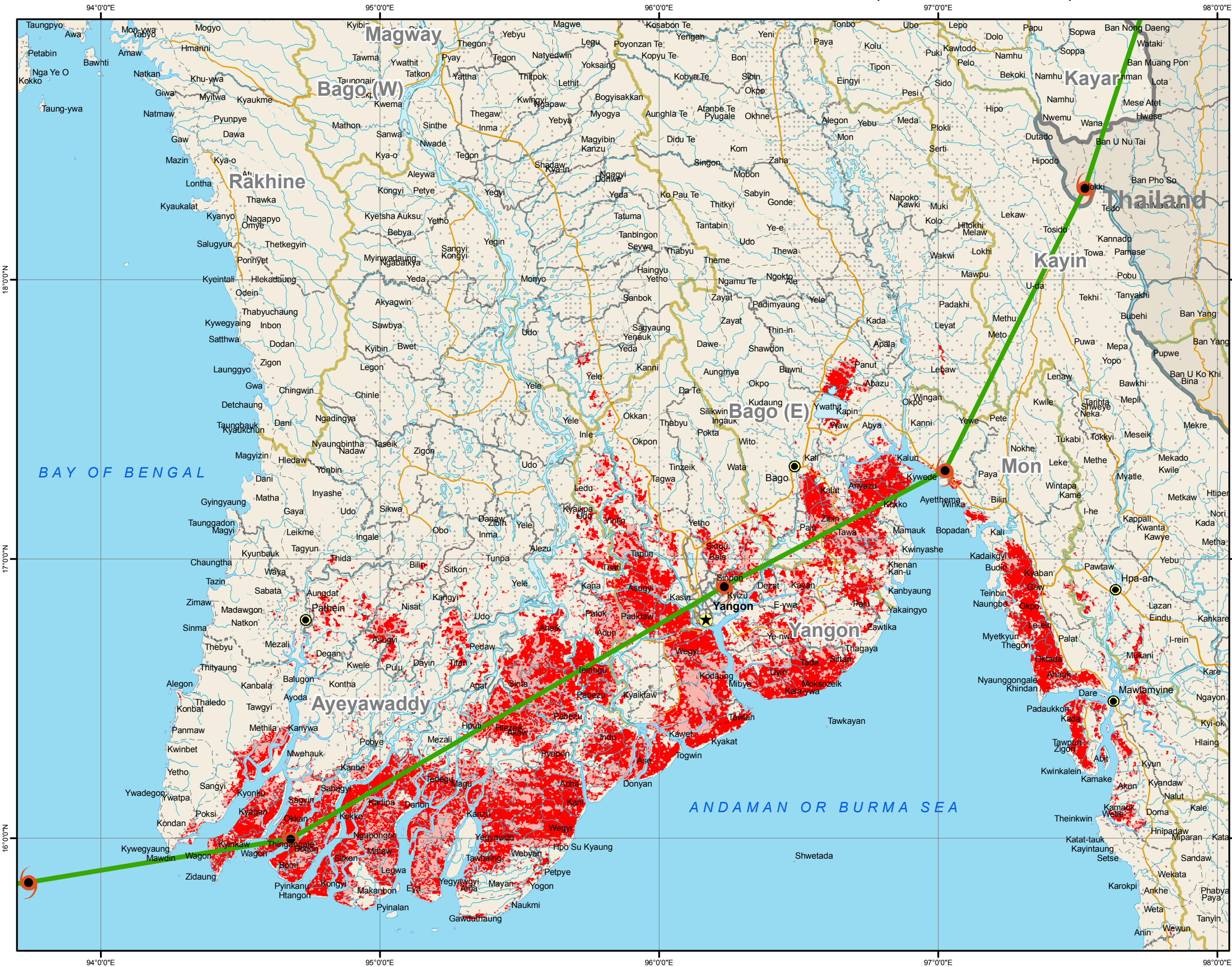


MYANMAR - Tropical Cyclone NARGIS estimated affected areas

Modis Satellite Imagery change detection analysis
(21.04 - 05.05.2008)

ITHACA, 05.05.2008



Legend

- Tropical Cyclone NARGIS track (GDACS)
- Water/Wet areas or Vegetation Loss
- Affected areas
- Populated Places
- National capital
- Province capital
- Town or village

Road

- Primary road
- Secondary road
- Tertiary road
- Local road

Reference Water

- River/Stream - perennial
- River/Stream - non perennial
- Inland Water

Administrative boundary (GAUL)

- Coastline
- International
- Primary/1st Order
- Secondary/2nd Order
- 3rd Order

Region	N. of people living in satellite detected water/wet areas or vegetation loss (+/- 10%)	N. of people living in estimated affected areas (+/- 10%)
Bago (E)	101,000	198,500
Bago (W)	2,500	4,000
Mon	214,500	275,000
Yangon	477,000	783,500
Ayeyawaddy	883,000	1,435,500
Kayin	13,500	17,000
TOT	1,691,500	2,713,500

1:1,400,000 on A3 paper format
0 5 10 20 30 40 km
Geographic Coordinates - WGS84

Source for Vector Map level 0 (VMAPO) datasets was the United States National Imagery and Mapping Agency. MODIS images are available in the LAADS archive through FTP on ftp://ladsftp.nascom.nasa.gov/ Names and boundaries on this map do not imply acceptance or recognition by the World Food Programme or by the United Nations. Facts and figures in this map are accurate and up to date to the best of our knowledge at the time of writing but subject to change at any time. The World Food Programme makes no warranty or representation as to the reliability or accuracy of the data contained herein. This map is for planning purposes only. © United Nations World Food Programme 2007. All rights reserved.

Produced by ITHACA
in cooperation with WFP